



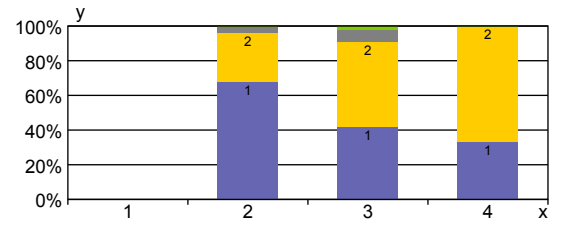


| y | 1 | 2 | 3 | 4 | |
|---|---|---|---|---|------|
| x |  |  |  |  | |
| 1 | 0% | 0% | 0% | 0% | 0% |
| 2 | 67.9% | 28.6% | 3.6% | 0% | 100% |
| 3 | 41.8% | 49.1% | 7.3% | 1.8% | 100% |
| 4 | 33.3% | 66.7% | 0% | 0% | 100% |
| | 47.5% | 46.5% | 5% | 1% | 100% |







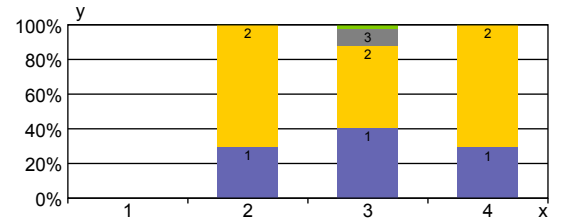
x: Ich bin...

- 1: Schüler/in
- 2: Lehrer/in
- 3: Elternteil
- 4: Mitarbeiter/in

y: An unserer Schule lernen die Schüler/innen mit gutem Erfolg.

- 1: trifft voll zu
- 2:
- 3:
- 4: trifft nicht zu

| y | 1 | 2 | 3 | 4 | |
|---|---|---|---|---|------|
| x |  |  |  |  | |
| 1 | 0% | 0% | 0% | 0% | 0% |
| 2 | 29.6% | 70.4% | 0% | 0% | 100% |
| 3 | 40.5% | 47.6% | 9.5% | 2.4% | 100% |
| 4 | 29.4% | 70.6% | 0% | 0% | 100% |
| | 34.9% | 59.3% | 4.7% | 1.2% | 100% |







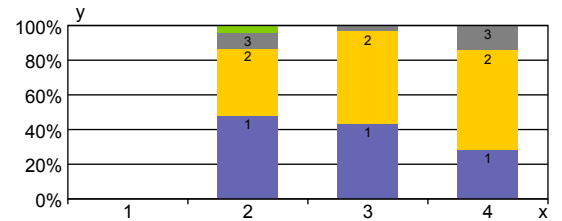
x: Ich bin...

- 1: Schüler/in
- 2: Lehrer/in
- 3: Elternteil
- 4: Mitarbeiter/in

y: Die Schüler/innen unserer Schule strengen sich im Unterricht an.

- 1: trifft voll zu
- 2:
- 3:
- 4: trifft nicht zu

| y | 1 | 2 | 3 | 4 | |
|---|---|---|---|---|------|
| x |  |  |  |  | |
| 1 | 0% | 0% | 0% | 0% | 0% |
| 2 | 47.8% | 39.1% | 8.7% | 4.3% | 100% |
| 3 | 43.3% | 53.3% | 3.3% | 0% | 100% |
| 4 | 28.6% | 57.1% | 14.3% | 0% | 100% |
| | 41.8% | 49.3% | 7.5% | 1.5% | 100% |







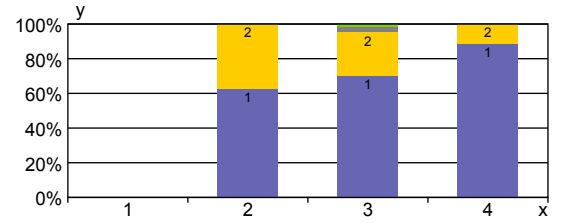
x: Ich bin...

- 1: Schüler/in
- 2: Lehrer/in
- 3: Elternteil
- 4: Mitarbeiter/in

y: Wer unsere Schule verlässt, ist gut vorbereitet auf eine weiterführende Schule (oder eine Ausbildung).

- 1: trifft voll zu
- 2:
- 3:
- 4: trifft nicht zu

| y | 1 | 2 | 3 | 4 | |
|---|---|---|---|---|------|
| x |  |  |  |  | |
| 1 | 0% | 0% | 0% | 0% | 0% |
| 2 | 63% | 37% | 0% | 0% | 100% |
| 3 | 70.3% | 25% | 3.1% | 1.6% | 100% |
| 4 | 88.9% | 11.1% | 0% | 0% | 100% |
| | 71.6% | 25.7% | 1.8% | 0.9% | 100% |







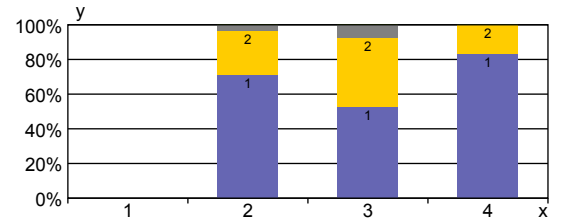
x: Ich bin...

- 1: Schüler/in
- 2: Lehrer/in
- 3: Elternteil
- 4: Mitarbeiter/in

y: Die Schüler/innen besuchen unsere Schule gern.

- 1: trifft voll zu
- 2:
- 3:
- 4: trifft nicht zu

| y | 1 | 2 | 3 | 4 | |
|---|---|---|---|---|------|
| x |  |  |  |  | |
| 1 | 0% | 0% | 0% | 0% | 0% |
| 2 | 71.4% | 25% | 3.6% | 0% | 100% |
| 3 | 52.7% | 40% | 7.3% | 0% | 100% |
| 4 | 83.3% | 16.7% | 0% | 0% | 100% |
| | 63.4% | 31.7% | 5% | 0% | 100% |







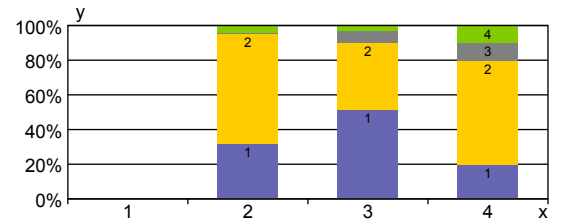
x: Ich bin...

- 1: Schüler/in
- 2: Lehrer/in
- 3: Elternteil
- 4: Mitarbeiter/in

y: Ich fühle mich unserer Schule zugehörig.

- 1: trifft voll zu
- 2:
- 3:
- 4: trifft nicht zu

| y | 1 | 2 | 3 | 4 | |
|---|---|---|---|---|------|
| x |  |  |  |  | |
| 1 | 0% | 0% | 0% | 0% | 0% |
| 2 | 31.8% | 63.6% | 0% | 4.5% | 100% |
| 3 | 51.6% | 38.7% | 6.5% | 3.2% | 100% |
| 4 | 20% | 60% | 10% | 10% | 100% |
| | 39.7% | 50.8% | 4.8% | 4.8% | 100% |







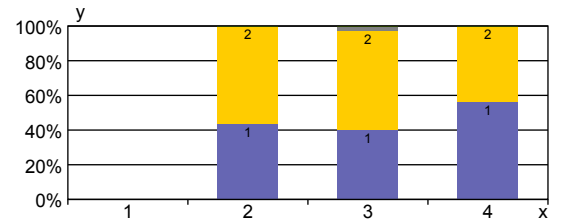
x: Ich bin...

- 1: Schüler/in
- 2: Lehrer/in
- 3: Elternteil
- 4: Mitarbeiter/in

y: In der Zeitung steht oft etwas Gutes über unsere Schule.

- 1: trifft voll zu
- 2:
- 3:
- 4: trifft nicht zu

| y | 1 | 2 | 3 | 4 | |
|---|---|---|---|---|------|
| x |  |  |  |  | |
| 1 | 0% | 0% | 0% | 0% | 0% |
| 2 | 43.5% | 56.5% | 0% | 0% | 100% |
| 3 | 40% | 57.5% | 2.5% | 0% | 100% |
| 4 | 56.3% | 43.8% | 0% | 0% | 100% |
| | 44.3% | 54.4% | 1.3% | 0% | 100% |







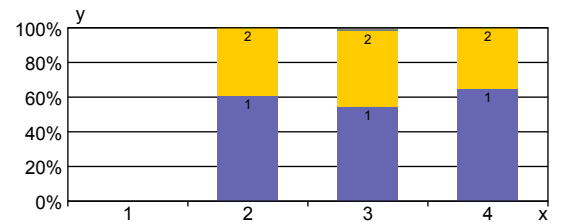
x: Ich bin...

- 1: Schüler/in
- 2: Lehrer/in
- 3: Elternteil
- 4: Mitarbeiter/in

y: Wenn unsere Schule Gäste hat, sprechen sie positiv über unsere Schule.

- 1: trifft voll zu
- 2:
- 3:
- 4: trifft nicht zu

| y | 1 | 2 | 3 | 4 | |
|---|---|---|---|---|------|
| x |  |  |  |  | |
| 1 | 0% | 0% | 0% | 0% | 0% |
| 2 | 60.7% | 39.3% | 0% | 0% | 100% |
| 3 | 54.4% | 43.9% | 1.8% | 0% | 100% |
| 4 | 64.7% | 35.3% | 0% | 0% | 100% |
| | 57.8% | 41.2% | 1% | 0% | 100% |







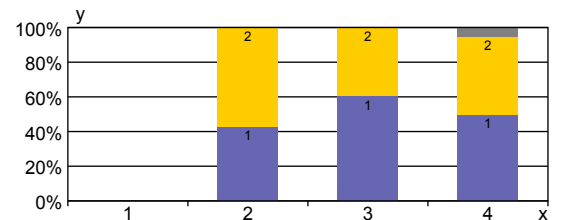
x: Ich bin...

- 1: Schüler/in
- 2: Lehrer/in
- 3: Elternteil
- 4: Mitarbeiter/in

y: Was im Unterricht gelernt wird, geht Schritt für Schritt.

- 1: trifft voll zu
- 2:
- 3:
- 4: trifft nicht zu

| y | 1 | 2 | 3 | 4 | |
|---|---|---|---|---|------|
| x |  |  |  |  | |
| 1 | 0% | 0% | 0% | 0% | 0% |
| 2 | 42.9% | 57.1% | 0% | 0% | 100% |
| 3 | 60.4% | 39.6% | 0% | 0% | 100% |
| 4 | 50% | 44.4% | 5.6% | 0% | 100% |
| | 53.5% | 45.5% | 1% | 0% | 100% |







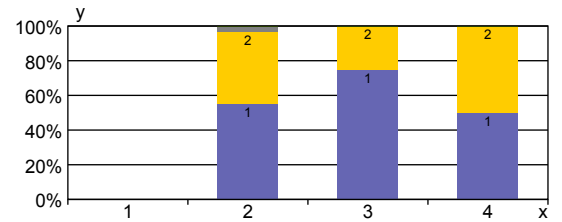
x: Ich bin...

- 1: Schüler/in
- 2: Lehrer/in
- 3: Elternteil
- 4: Mitarbeiter/in

y: Unsere Schule achtet darauf, dass Themen aus verschiedenen Fächern miteinander verbunden werden.

- 1: trifft voll zu
- 2:
- 3:
- 4: trifft nicht zu

| y | 1 | 2 | 3 | 4 | |
|---|---|---|---|---|------|
| x |  |  |  |  | |
| 1 | 0% | 0% | 0% | 0% | 0% |
| 2 | 55.2% | 41.4% | 3.4% | 0% | 100% |
| 3 | 75% | 25% | 0% | 0% | 100% |
| 4 | 50% | 50% | 0% | 0% | 100% |
| | 65% | 34% | 1% | 0% | 100% |







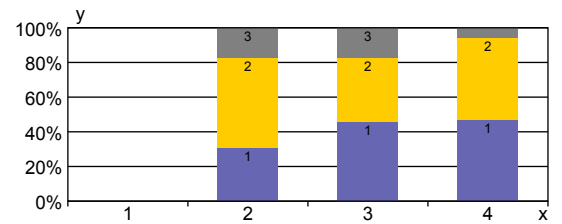
x: Ich bin...

- 1: Schüler/in
- 2: Lehrer/in
- 3: Elternteil
- 4: Mitarbeiter/in

y: Unsere Schule achtet darauf, dass Schüler/innen im Unterricht selbständig arbeiten (z.B. durch Wochenpläne, Stationenlernen, ...)

- 1: trifft voll zu
- 2:
- 3:
- 4: trifft nicht zu

| y | 1 | 2 | 3 | 4 | |
|---|---|---|---|---|------|
| x |  |  |  |  | |
| 1 | 0% | 0% | 0% | 0% | 0% |
| 2 | 31% | 51.7% | 17.2% | 0% | 100% |
| 3 | 45.7% | 37% | 17.4% | 0% | 100% |
| 4 | 47.1% | 47.1% | 5.9% | 0% | 100% |
| | 41.3% | 43.5% | 15.2% | 0% | 100% |







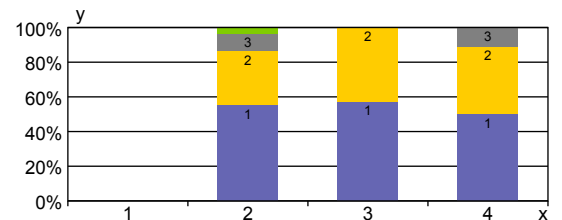
x: Ich bin...

- 1: Schüler/in
- 2: Lehrer/in
- 3: Elternteil
- 4: Mitarbeiter/in

y: Das Lernen mit Medien (z.B. Arbeit in der Schulbibliothek oder am Computer) ist an unserer Schule wichtig.

- 1: trifft voll zu
- 2:
- 3:
- 4: trifft nicht zu

| y | 1 | 2 | 3 | 4 | |
|---|---|---|---|---|------|
| x |  |  |  |  | |
| 1 | 0% | 0% | 0% | 0% | 0% |
| 2 | 55.2% | 31% | 10.3% | 3.4% | 100% |
| 3 | 57.1% | 42.9% | 0% | 0% | 100% |
| 4 | 50% | 38.9% | 11.1% | 0% | 100% |
| | 55.3% | 38.8% | 4.9% | 1% | 100% |







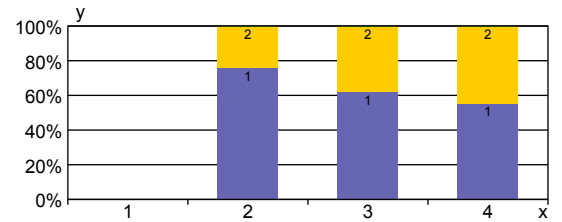
x: Ich bin...

- 1: Schüler/in
- 2: Lehrer/in
- 3: Elternteil
- 4: Mitarbeiter/in

y: Dass Schüler/innen miteinander lernen, hat an unserer Schule eine große Bedeutung.

- 1: trifft voll zu
- 2:
- 3:
- 4: trifft nicht zu

| y | | 1 | 2 | 3 | 4 | |
|---|--|---|---|---|---|------|
| x | |  |  |  |  | |
| 1 | | 0% | 0% | 0% | 0% | 0% |
| 2 | | 75.9% | 24.1% | 0% | 0% | 100% |
| 3 | | 62.1% | 37.9% | 0% | 0% | 100% |
| 4 | | 55.6% | 44.4% | 0% | 0% | 100% |
| | | 64.8% | 35.2% | 0% | 0% | 100% |



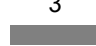



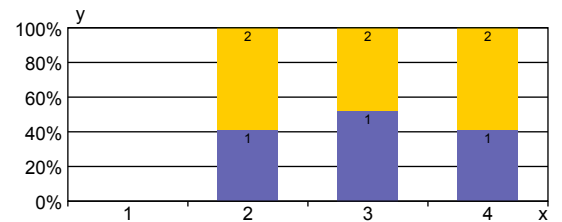
x: Ich bin...

- 1: Schüler/in
- 2: Lehrer/in
- 3: Elternteil
- 4: Mitarbeiter/in

y: Die Lehrer/innen unterstützen verschiedene Fähigkeiten und Interessen der Schüler/innen.

- 1: trifft voll zu
- 2:
- 3:
- 4: trifft nicht zu

| y | | 1 | 2 | 3 | 4 | |
|---|--|---|---|---|---|------|
| x | |  |  |  |  | |
| 1 | | 0% | 0% | 0% | 0% | 0% |
| 2 | | 41.4% | 58.6% | 0% | 0% | 100% |
| 3 | | 52% | 48% | 0% | 0% | 100% |
| 4 | | 41.2% | 58.8% | 0% | 0% | 100% |
| | | 46.9% | 53.1% | 0% | 0% | 100% |



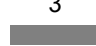



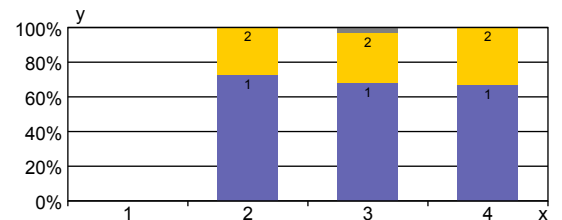
x: Ich bin...

- 1: Schüler/in
- 2: Lehrer/in
- 3: Elternteil
- 4: Mitarbeiter/in

y: Die Lehrer/innen vermitteln die Inhalte des Unterrichts klar und verständlich.

- 1: trifft voll zu
- 2:
- 3:
- 4: trifft nicht zu

| y | | 1 | 2 | 3 | 4 | |
|---|--|---|---|---|---|------|
| x | |  |  |  |  | |
| 1 | | 0% | 0% | 0% | 0% | 0% |
| 2 | | 72.4% | 27.6% | 0% | 0% | 100% |
| 3 | | 67.8% | 28.8% | 3.4% | 0% | 100% |
| 4 | | 66.7% | 33.3% | 0% | 0% | 100% |
| | | 68.9% | 29.2% | 1.9% | 0% | 100% |







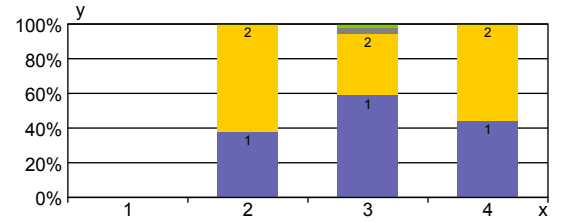
x: Ich bin...

- 1: Schüler/in
- 2: Lehrer/in
- 3: Elternteil
- 4: Mitarbeiter/in

y: Die Lehrer/innen unserer Schule ermutigen und unterstützen die Schüler/innen.

- 1: trifft voll zu
- 2:
- 3:
- 4: trifft nicht zu

| y | 1 | 2 | 3 | 4 | |
|---|---|---|---|---|------|
| x |  |  |  |  | |
| 1 | 0% | 0% | 0% | 0% | 0% |
| 2 | 37.9% | 62.1% | 0% | 0% | 100% |
| 3 | 58.9% | 35.7% | 3.6% | 1.8% | 100% |
| 4 | 44.4% | 55.6% | 0% | 0% | 100% |
| | 50.5% | 46.6% | 1.9% | 1% | 100% |







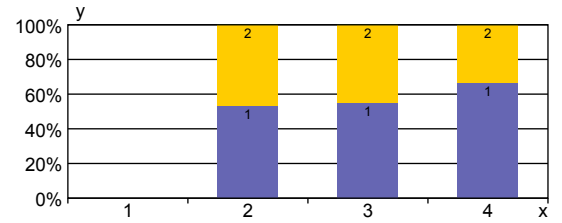
x: Ich bin...

- 1: Schüler/in
- 2: Lehrer/in
- 3: Elternteil
- 4: Mitarbeiter/in

y: Die Lehrer/innen unserer Schule machen den Schüler/innen Lust am Lernen.

- 1: trifft voll zu
- 2:
- 3:
- 4: trifft nicht zu

| y | 1 | 2 | 3 | 4 | |
|---|---|---|---|---|------|
| x |  |  |  |  | |
| 1 | 0% | 0% | 0% | 0% | 0% |
| 2 | 53.6% | 46.4% | 0% | 0% | 100% |
| 3 | 54.9% | 45.1% | 0% | 0% | 100% |
| 4 | 66.7% | 33.3% | 0% | 0% | 100% |
| | 56.7% | 43.3% | 0% | 0% | 100% |







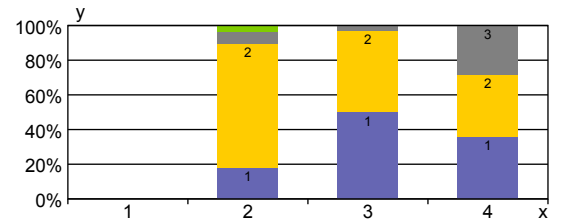
x: Ich bin...

- 1: Schüler/in
- 2: Lehrer/in
- 3: Elternteil
- 4: Mitarbeiter/in

y: Der Unterricht an unserer Schule ist abwechslungsreich gestaltet.

- 1: trifft voll zu
- 2:
- 3:
- 4: trifft nicht zu

| y | 1 | 2 | 3 | 4 | |
|---|---|---|---|---|------|
| x |  |  |  |  | |
| 1 | 0% | 0% | 0% | 0% | 0% |
| 2 | 17.9% | 71.4% | 7.1% | 3.6% | 100% |
| 3 | 50% | 47.1% | 2.9% | 0% | 100% |
| 4 | 35.7% | 35.7% | 28.6% | 0% | 100% |
| | 35.5% | 53.9% | 9.2% | 1.3% | 100% |







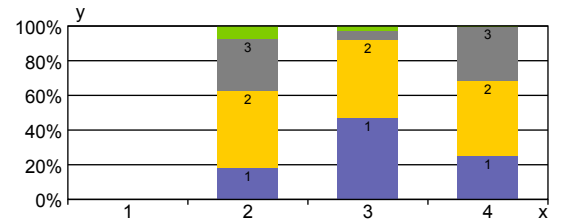
x: Ich bin...

- 1: Schüler/in
- 2: Lehrer/in
- 3: Elternteil
- 4: Mitarbeiter/in

y: Schüler/innen stellen regelmäßig Arbeitsergebnisse im Unterricht vor.

- 1: trifft voll zu
- 2:
- 3:
- 4: trifft nicht zu

| y | 1 | 2 | 3 | 4 | |
|---|---|---|---|---|------|
| x |  |  |  |  | |
| 1 | 0% | 0% | 0% | 0% | 0% |
| 2 | 18.5% | 44.4% | 29.6% | 7.4% | 100% |
| 3 | 47.4% | 44.7% | 5.3% | 2.6% | 100% |
| 4 | 25% | 43.8% | 31.3% | 0% | 100% |
| | 33.3% | 44.4% | 18.5% | 3.7% | 100% |







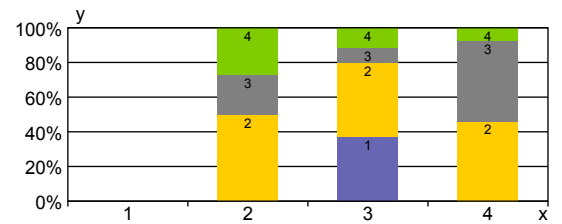
x: Ich bin...

- 1: Schüler/in
- 2: Lehrer/in
- 3: Elternteil
- 4: Mitarbeiter/in

y: Die Schüler/innen erhalten regelmäßig Informationen über den Leistungsstand.

- 1: trifft voll zu
- 2:
- 3:
- 4: trifft nicht zu

| y | 1 | 2 | 3 | 4 | |
|---|---|---|---|---|------|
| x |  |  |  |  | |
| 1 | 0% | 0% | 0% | 0% | 0% |
| 2 | 0% | 50% | 22.7% | 27.3% | 100% |
| 3 | 37.1% | 42.9% | 8.6% | 11.4% | 100% |
| 4 | 0% | 46.2% | 46.2% | 7.7% | 100% |
| | 18.6% | 45.7% | 20% | 15.7% | 100% |







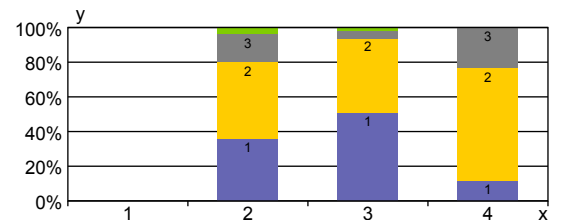
x: Ich bin...

- 1: Schüler/in
- 2: Lehrer/in
- 3: Elternteil
- 4: Mitarbeiter/in

y: Aus Bewertungen (Noten) können Schüler/innen an unserer Schule etwas lernen.

- 1: trifft voll zu
- 2:
- 3:
- 4: trifft nicht zu

| y | 1 | 2 | 3 | 4 | |
|---|---|---|---|---|------|
| x |  |  |  |  | |
| 1 | 0% | 0% | 0% | 0% | 0% |
| 2 | 36% | 44% | 16% | 4% | 100% |
| 3 | 51% | 42.9% | 4.1% | 2% | 100% |
| 4 | 11.8% | 64.7% | 23.5% | 0% | 100% |
| | 39.6% | 47.3% | 11% | 2.2% | 100% |







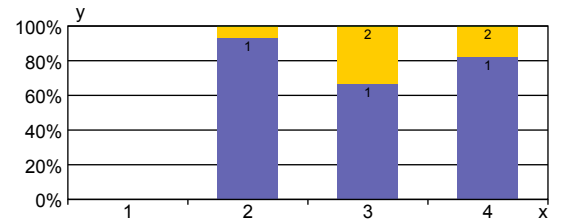
x: Ich bin...

- 1: Schüler/in
- 2: Lehrer/in
- 3: Elternteil
- 4: Mitarbeiter/in

y: Im Unterricht geht es auch darum, wie man am besten lernt.

- 1: trifft voll zu
- 2:
- 3:
- 4: trifft nicht zu

| y | 1 | 2 | 3 | 4 | |
|---|---|---|---|---|------|
| x |  |  |  |  | |
| 1 | 0% | 0% | 0% | 0% | 0% |
| 2 | 93.1% | 6.9% | 0% | 0% | 100% |
| 3 | 66.7% | 33.3% | 0% | 0% | 100% |
| 4 | 82.4% | 17.6% | 0% | 0% | 100% |
| | 76.7% | 23.3% | 0% | 0% | 100% |



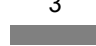



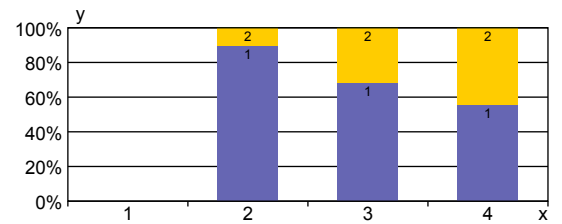
x: Ich bin...

- 1: Schüler/in
- 2: Lehrer/in
- 3: Elternteil
- 4: Mitarbeiter/in

y: Wenn ein/e Schüler/in etwas nicht versteht, hilft der/die Lehrer/in.

- 1: trifft voll zu
- 2:
- 3:
- 4: trifft nicht zu

| y | 1 | 2 | 3 | 4 | |
|---|---|---|---|---|------|
| x |  |  |  |  | |
| 1 | 0% | 0% | 0% | 0% | 0% |
| 2 | 89.7% | 10.3% | 0% | 0% | 100% |
| 3 | 68.4% | 31.6% | 0% | 0% | 100% |
| 4 | 55.6% | 44.4% | 0% | 0% | 100% |
| | 72.1% | 27.9% | 0% | 0% | 100% |



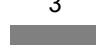



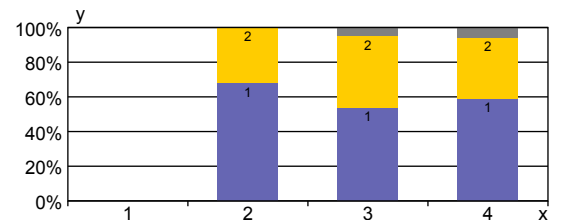
x: Ich bin...

- 1: Schüler/in
- 2: Lehrer/in
- 3: Elternteil
- 4: Mitarbeiter/in

y: Die Lehrer/innen sind geduldig mit Schüler/innen, denen das Lernen nicht so leicht fällt.

- 1: trifft voll zu
- 2:
- 3:
- 4: trifft nicht zu

| y | 1 | 2 | 3 | 4 | |
|---|---|---|---|---|------|
| x |  |  |  |  | |
| 1 | 0% | 0% | 0% | 0% | 0% |
| 2 | 67.9% | 32.1% | 0% | 0% | 100% |
| 3 | 53.8% | 41% | 5.1% | 0% | 100% |
| 4 | 58.8% | 35.3% | 5.9% | 0% | 100% |
| | 59.5% | 36.9% | 3.6% | 0% | 100% |







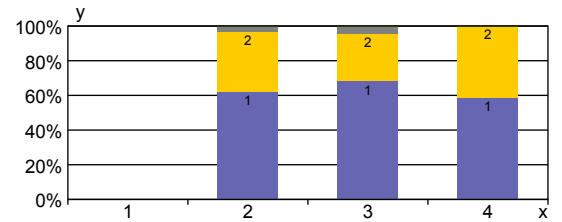
x: Ich bin...

- 1: Schüler/in
- 2: Lehrer/in
- 3: Elternteil
- 4: Mitarbeiter/in

y: Schüler/innen bekommen Zusatzangebote, wenn sie mit einer Arbeit schneller fertig sind als die anderen.

- 1: trifft voll zu
- 2:
- 3:
- 4: trifft nicht zu

| y | 1 | 2 | 3 | 4 | |
|---|---|---|---|---|------|
| x |  |  |  |  | |
| 1 | 0% | 0% | 0% | 0% | 0% |
| 2 | 62.1% | 34.5% | 3.4% | 0% | 100% |
| 3 | 68.1% | 27.7% | 4.3% | 0% | 100% |
| 4 | 58.8% | 41.2% | 0% | 0% | 100% |
| | 64.5% | 32.3% | 3.2% | 0% | 100% |







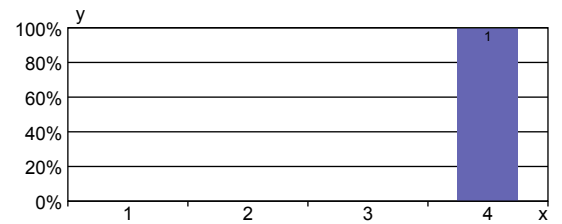
x: Ich bin...

- 1: Schüler/in
- 2: Lehrer/in
- 3: Elternteil
- 4: Mitarbeiter/in

y: Unsere Schule bietet Beratung bei Problemen in der Schule oder zu Hause.

- 1: trifft voll zu
- 2:
- 3:
- 4: trifft nicht zu

| y | 1 | 2 | 3 | 4 | |
|---|---|---|---|---|------|
| x |  |  |  |  | |
| 1 | 0% | 0% | 0% | 0% | 0% |
| 2 | 0% | 0% | 0% | 0% | 0% |
| 3 | 0% | 0% | 0% | 0% | 0% |
| 4 | 100% | 0% | 0% | 0% | 100% |
| | 100% | 0% | 0% | 0% | 100% |







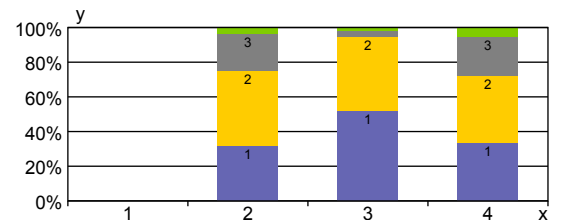
x: Ich bin...

- 1: Schüler/in
- 2: Lehrer/in
- 3: Elternteil
- 4: Mitarbeiter/in

y: An unserer Schule ist klar, was geschieht, wenn ein/e Schüler/ in die Schule schwänzt.

- 1: trifft voll zu
- 2:
- 3:
- 4: trifft nicht zu

| y | 1 | 2 | 3 | 4 | |
|---|---|---|---|---|------|
| x |  |  |  |  | |
| 1 | 0% | 0% | 0% | 0% | 0% |
| 2 | 32.1% | 42.9% | 21.4% | 3.6% | 100% |
| 3 | 51.9% | 42.6% | 3.7% | 1.9% | 100% |
| 4 | 33.3% | 38.9% | 22.2% | 5.6% | 100% |
| | 43% | 42% | 12% | 3% | 100% |







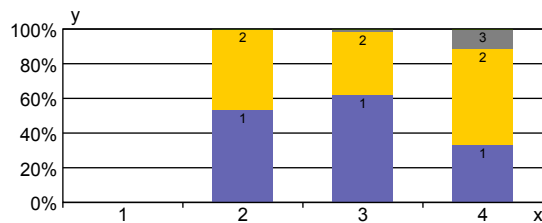
x: Ich bin...

- 1: Schüler/in
- 2: Lehrer/in
- 3: Elternteil
- 4: Mitarbeiter/in

y: An unserer Schule gibt es viele zusätzliche Angebote und Arbeitsgemeinschaften.

- 1: trifft voll zu
- 2:
- 3:
- 4: trifft nicht zu

| y | 1 | 2 | 3 | 4 | |
|---|---|---|---|---|------|
| x |  |  |  |  | |
| 1 | 0% | 0% | 0% | 0% | 0% |
| 2 | 53.6% | 46.4% | 0% | 0% | 100% |
| 3 | 62.3% | 36.1% | 1.6% | 0% | 100% |
| 4 | 33.3% | 55.6% | 11.1% | 0% | 100% |
| | 55.1% | 42.1% | 2.8% | 0% | 100% |







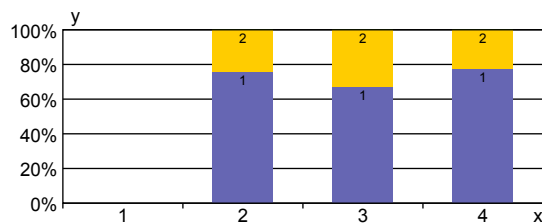
x: Ich bin...

- 1: Schüler/in
- 2: Lehrer/in
- 3: Elternteil
- 4: Mitarbeiter/in

y: Wir haben ein vielseitiges Schulleben (z.B. Theater, Musik, Feste, Sportveranstaltungen).

- 1: trifft voll zu
- 2:
- 3:
- 4: trifft nicht zu

| y | 1 | 2 | 3 | 4 | |
|---|---|---|---|---|------|
| x |  |  |  |  | |
| 1 | 0% | 0% | 0% | 0% | 0% |
| 2 | 75.9% | 24.1% | 0% | 0% | 100% |
| 3 | 67.2% | 32.8% | 0% | 0% | 100% |
| 4 | 77.8% | 22.2% | 0% | 0% | 100% |
| | 71.3% | 28.7% | 0% | 0% | 100% |







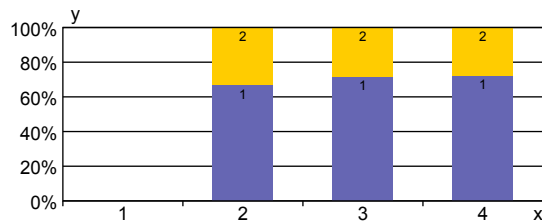
x: Ich bin...

- 1: Schüler/in
- 2: Lehrer/in
- 3: Elternteil
- 4: Mitarbeiter/in

y: Die Schule achtet darauf, dass alle rücksichtsvoll und fair miteinander umgehen.

- 1: trifft voll zu
- 2:
- 3:
- 4: trifft nicht zu

| y | 1 | 2 | 3 | 4 | |
|---|---|---|---|---|------|
| x |  |  |  |  | |
| 1 | 0% | 0% | 0% | 0% | 0% |
| 2 | 66.7% | 33.3% | 0% | 0% | 100% |
| 3 | 71.4% | 28.6% | 0% | 0% | 100% |
| 4 | 72.2% | 27.8% | 0% | 0% | 100% |
| | 70.3% | 29.7% | 0% | 0% | 100% |



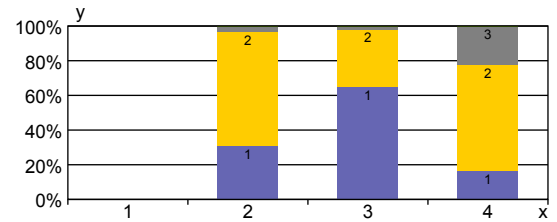
x: Ich bin...

- 1: Schüler/in
- 2: Lehrer/in
- 3: Elternteil
- 4: Mitarbeiter/in

y: Gegen Gewalt wird an unserer Schule etwas getan.

- 1: trifft voll zu
- 2:
- 3:
- 4: trifft nicht zu

| x \ y | 1 | 2 | 3 | 4 | |
|-------|-------|-------|-------|----|------|
| 1 | 0% | 0% | 0% | 0% | 0% |
| 2 | 31% | 65.5% | 3.4% | 0% | 100% |
| 3 | 64.9% | 33.3% | 1.8% | 0% | 100% |
| 4 | 16.7% | 61.1% | 22.2% | 0% | 100% |
| | 47.1% | 47.1% | 5.8% | 0% | 100% |



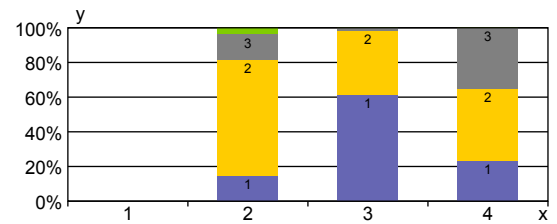
x: Ich bin...

- 1: Schüler/in
- 2: Lehrer/in
- 3: Elternteil
- 4: Mitarbeiter/in

y: Im Unterricht spielt das Thema "Gesund leben" eine wichtige Rolle (z.B. Ernährung, Bewegung).

- 1: trifft voll zu
- 2:
- 3:
- 4: trifft nicht zu

| x \ y | 1 | 2 | 3 | 4 | |
|-------|-------|-------|-------|------|------|
| 1 | 0% | 0% | 0% | 0% | 0% |
| 2 | 14.8% | 66.7% | 14.8% | 3.7% | 100% |
| 3 | 61.5% | 36.5% | 1.9% | 0% | 100% |
| 4 | 23.5% | 41.2% | 35.3% | 0% | 100% |
| | 41.7% | 45.8% | 11.5% | 1% | 100% |



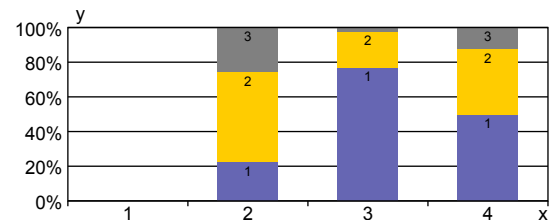
x: Ich bin...

- 1: Schüler/in
- 2: Lehrer/in
- 3: Elternteil
- 4: Mitarbeiter/in

y: Gefahren für die Gesundheit werden an unserer Schule vermieden (z.B. Stress, Druck, Angst, Lärm).

- 1: trifft voll zu
- 2:
- 3:
- 4: trifft nicht zu

| x \ y | 1 | 2 | 3 | 4 | |
|-------|-------|-------|-------|----|------|
| 1 | 0% | 0% | 0% | 0% | 0% |
| 2 | 22.2% | 51.9% | 25.9% | 0% | 100% |
| 3 | 76.7% | 20.9% | 2.3% | 0% | 100% |
| 4 | 50% | 37.5% | 12.5% | 0% | 100% |
| | 54.7% | 33.7% | 11.6% | 0% | 100% |







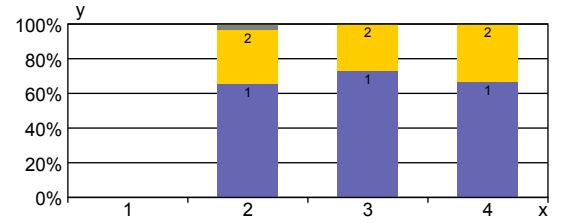
x: Ich bin...

- 1: Schüler/in
- 2: Lehrer/in
- 3: Elternteil
- 4: Mitarbeiter/in

y: Gegen Drogen (z.B. Rauchen und Alkohol) wird an unserer Schule etwas getan.

- 1: trifft voll zu
- 2:
- 3:
- 4: trifft nicht zu

| y | 1 | 2 | 3 | 4 | |
|---|---|---|---|---|------|
| x |  |  |  |  | |
| 1 | 0% | 0% | 0% | 0% | 0% |
| 2 | 65.5% | 31% | 3.4% | 0% | 100% |
| 3 | 73% | 27% | 0% | 0% | 100% |
| 4 | 66.7% | 33.3% | 0% | 0% | 100% |
| | 70% | 29.1% | 0.9% | 0% | 100% |







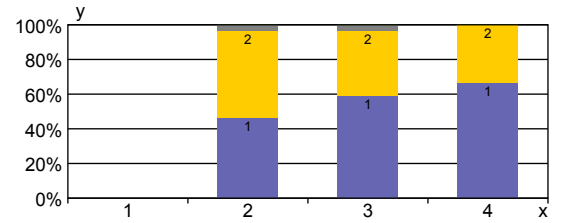
x: Ich bin...

- 1: Schüler/in
- 2: Lehrer/in
- 3: Elternteil
- 4: Mitarbeiter/in

y: Schüler/innen und Eltern werden bei uns über wichtige Dinge informiert.

- 1: trifft voll zu
- 2:
- 3:
- 4: trifft nicht zu

| y | 1 | 2 | 3 | 4 | |
|---|---|---|---|---|------|
| x |  |  |  |  | |
| 1 | 0% | 0% | 0% | 0% | 0% |
| 2 | 46.4% | 50% | 3.6% | 0% | 100% |
| 3 | 58.9% | 37.5% | 3.6% | 0% | 100% |
| 4 | 66.7% | 33.3% | 0% | 0% | 100% |
| | 56.9% | 40.2% | 2.9% | 0% | 100% |







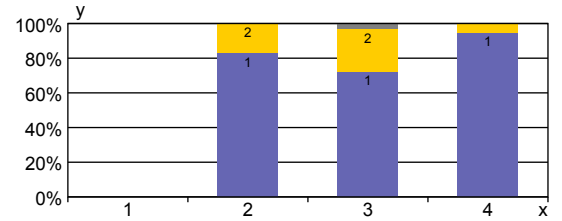
x: Ich bin...

- 1: Schüler/in
- 2: Lehrer/in
- 3: Elternteil
- 4: Mitarbeiter/in

y: Schüler/innen und Eltern können über wichtige Dinge mitentscheiden (z.B. im Schülerrat, Schulelternrat, Schulvorstand).

- 1: trifft voll zu
- 2:
- 3:
- 4: trifft nicht zu

| y | 1 | 2 | 3 | 4 | |
|---|---|---|---|---|------|
| x |  |  |  |  | |
| 1 | 0% | 0% | 0% | 0% | 0% |
| 2 | 82.8% | 17.2% | 0% | 0% | 100% |
| 3 | 72.1% | 24.6% | 3.3% | 0% | 100% |
| 4 | 94.4% | 5.6% | 0% | 0% | 100% |
| | 78.7% | 19.4% | 1.9% | 0% | 100% |







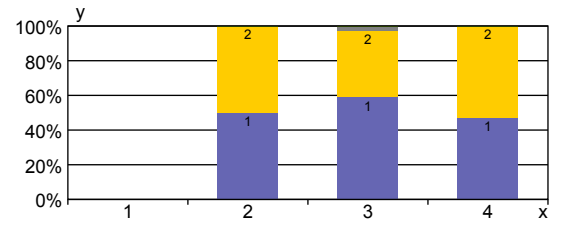
x: Ich bin...

- 1: Schüler/in
- 2: Lehrer/in
- 3: Elternteil
- 4: Mitarbeiter/in

y: Bei Fragen oder Problemen kann ich die Schulleitung ansprechen (z.B. im Rahmen regelmäßiger Sprechzeiten).

- 1: trifft voll zu
- 2:
- 3:
- 4: trifft nicht zu

| y | 1 | 2 | 3 | 4 | |
|---|---|---|---|---|------|
| x |  |  |  |  | |
| 1 | 0% | 0% | 0% | 0% | 0% |
| 2 | 50% | 50% | 0% | 0% | 100% |
| 3 | 59% | 38.5% | 2.6% | 0% | 100% |
| 4 | 47.1% | 52.9% | 0% | 0% | 100% |
| | 53.6% | 45.2% | 1.2% | 0% | 100% |







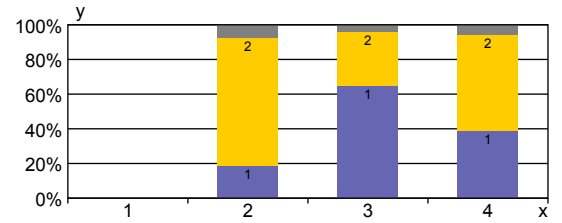
x: Ich bin...

- 1: Schüler/in
- 2: Lehrer/in
- 3: Elternteil
- 4: Mitarbeiter/in

y: Die Schulleitung bezieht andere in Entscheidungen ein.

- 1: trifft voll zu
- 2:
- 3:
- 4: trifft nicht zu

| y | 1 | 2 | 3 | 4 | |
|---|---|---|---|---|------|
| x |  |  |  |  | |
| 1 | 0% | 0% | 0% | 0% | 0% |
| 2 | 18.5% | 74.1% | 7.4% | 0% | 100% |
| 3 | 64.7% | 31.4% | 3.9% | 0% | 100% |
| 4 | 38.9% | 55.6% | 5.6% | 0% | 100% |
| | 46.9% | 47.9% | 5.2% | 0% | 100% |







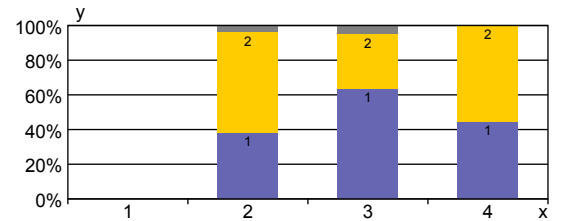
x: Ich bin...

- 1: Schüler/in
- 2: Lehrer/in
- 3: Elternteil
- 4: Mitarbeiter/in

y: Absprachen werden an unserer Schule eingehalten.

- 1: trifft voll zu
- 2:
- 3:
- 4: trifft nicht zu

| y | 1 | 2 | 3 | 4 | |
|---|---|---|---|---|------|
| x |  |  |  |  | |
| 1 | 0% | 0% | 0% | 0% | 0% |
| 2 | 38.5% | 57.7% | 3.8% | 0% | 100% |
| 3 | 63.3% | 31.7% | 5% | 0% | 100% |
| 4 | 44.4% | 55.6% | 0% | 0% | 100% |
| | 53.8% | 42.3% | 3.8% | 0% | 100% |



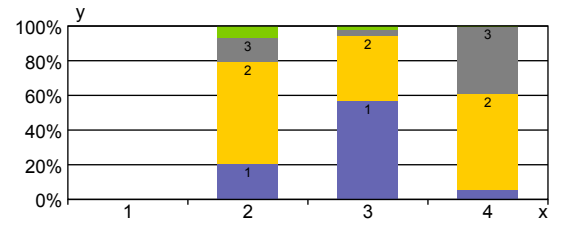
x: Ich bin...

- 1: Schüler/in
- 2: Lehrer/in
- 3: Elternteil
- 4: Mitarbeiter/in

y: An unserer Schule ist geregelt, an wen man sich wenden kann (z.B. wenn man eine Information oder Hilfe braucht).

- 1: trifft voll zu
- 2:
- 3:
- 4: trifft nicht zu

| x | y | 1 | 2 | 3 | 4 | |
|---|---|-------|-------|-------|------|------|
| 1 | | 0% | 0% | 0% | 0% | 0% |
| 2 | | 20.7% | 58.6% | 13.8% | 6.9% | 100% |
| 3 | | 57.1% | 37.5% | 3.6% | 1.8% | 100% |
| 4 | | 5.6% | 55.6% | 38.9% | 0% | 100% |
| | | 37.9% | 46.6% | 12.6% | 2.9% | 100% |



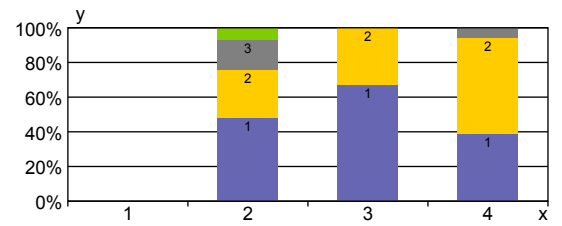
x: Ich bin...

- 1: Schüler/in
- 2: Lehrer/in
- 3: Elternteil
- 4: Mitarbeiter/in

y: Wenn eine Lehrerin / ein Lehrer fehlt, gibt es eine Vertretung.

- 1: trifft voll zu
- 2:
- 3:
- 4: trifft nicht zu

| x | y | 1 | 2 | 3 | 4 | |
|---|---|-------|-------|-------|------|------|
| 1 | | 0% | 0% | 0% | 0% | 0% |
| 2 | | 48.3% | 27.6% | 17.2% | 6.9% | 100% |
| 3 | | 67.3% | 32.7% | 0% | 0% | 100% |
| 4 | | 38.9% | 55.6% | 5.6% | 0% | 100% |
| | | 56.9% | 35.3% | 5.9% | 2% | 100% |



x: Ich bin...

- 1: Schüler/in
- 2: Lehrer/in
- 3: Elternteil
- 4: Mitarbeiter/in

y: In unseren Klassenräumen sind auch Partner- und Gruppenarbeit möglich.

- 1: trifft voll zu
- 2:
- 3:
- 4: trifft nicht zu